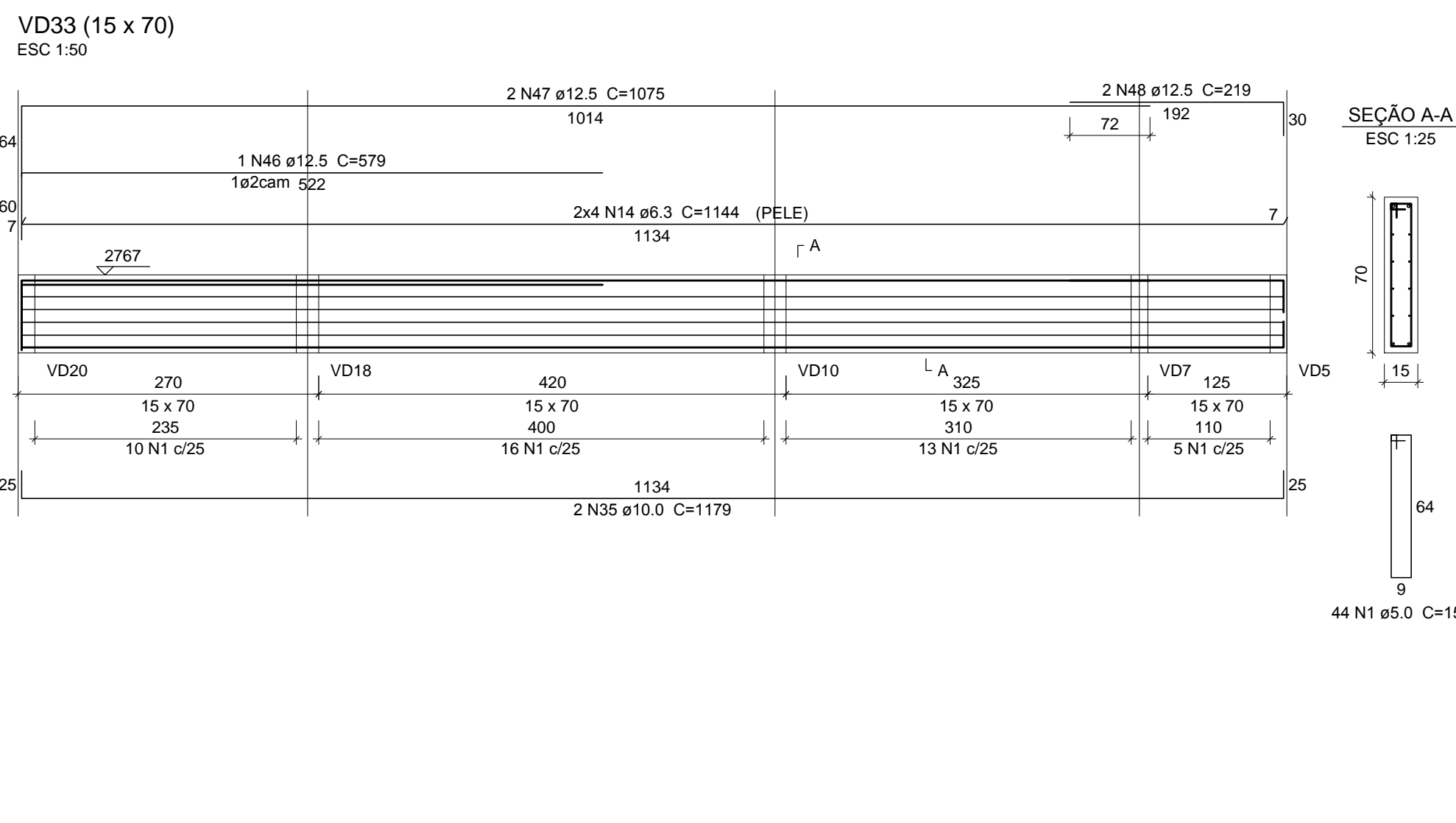
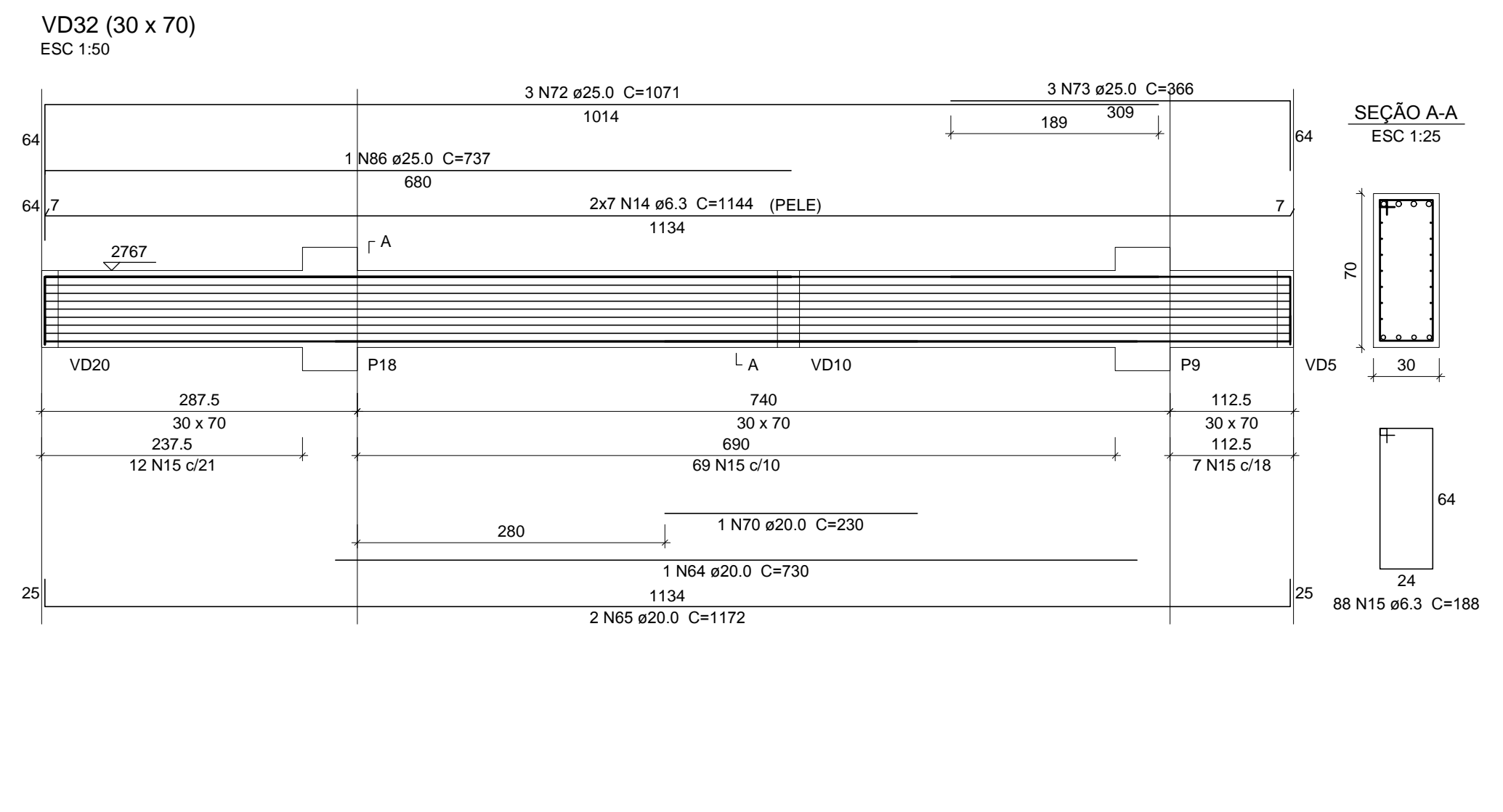
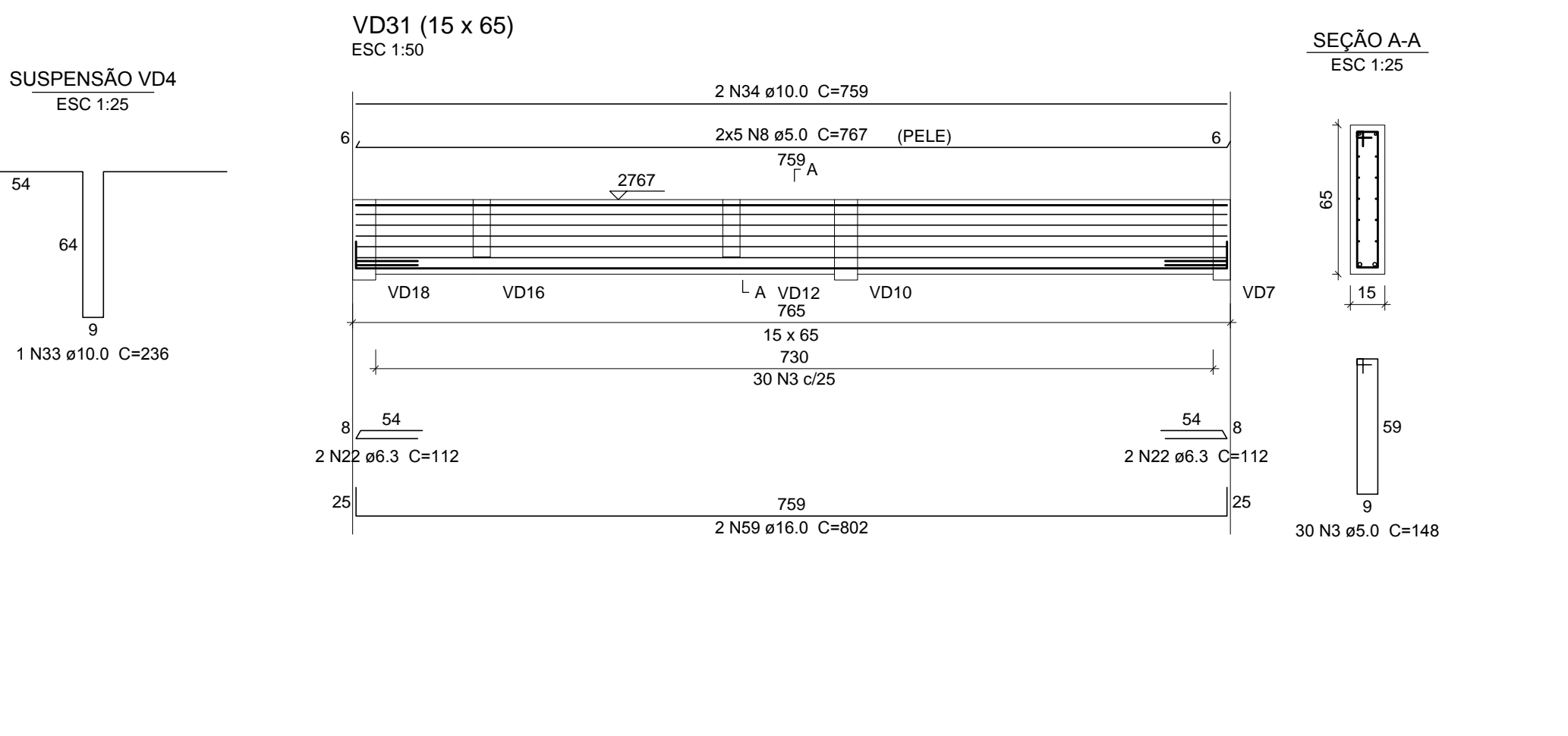
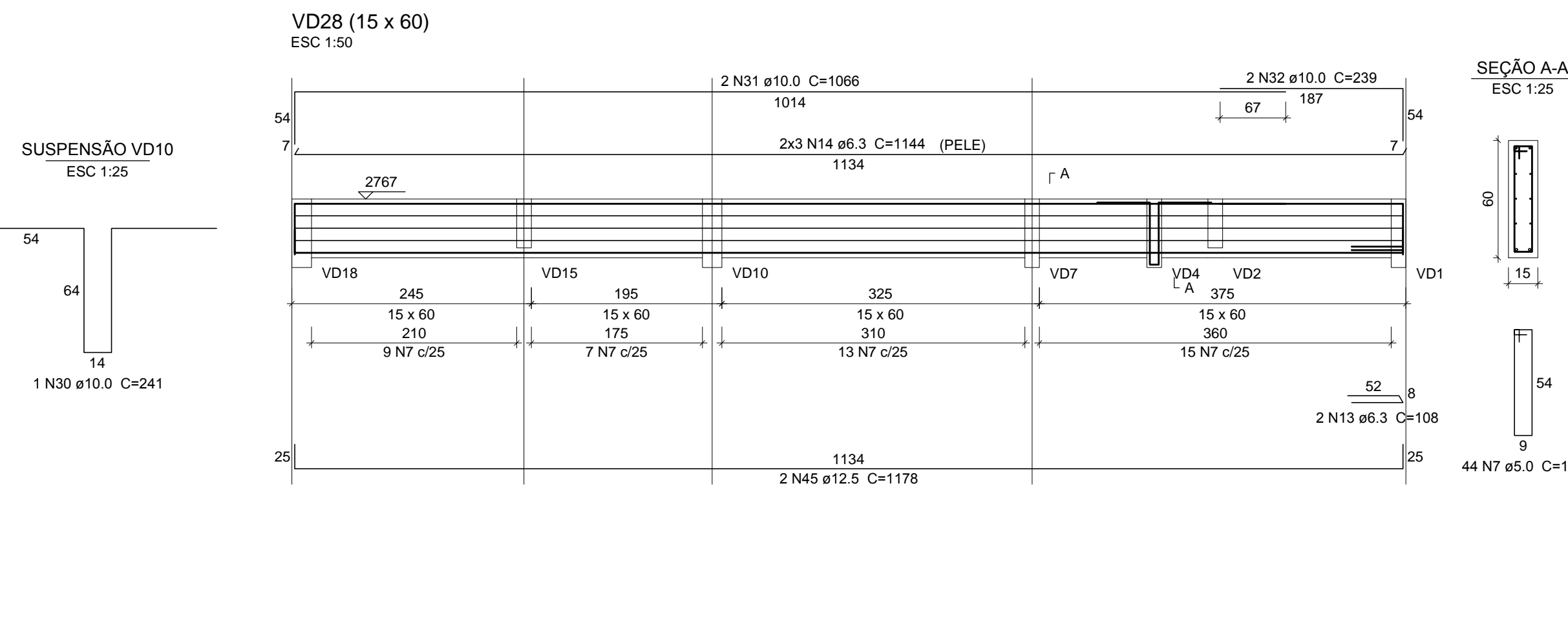
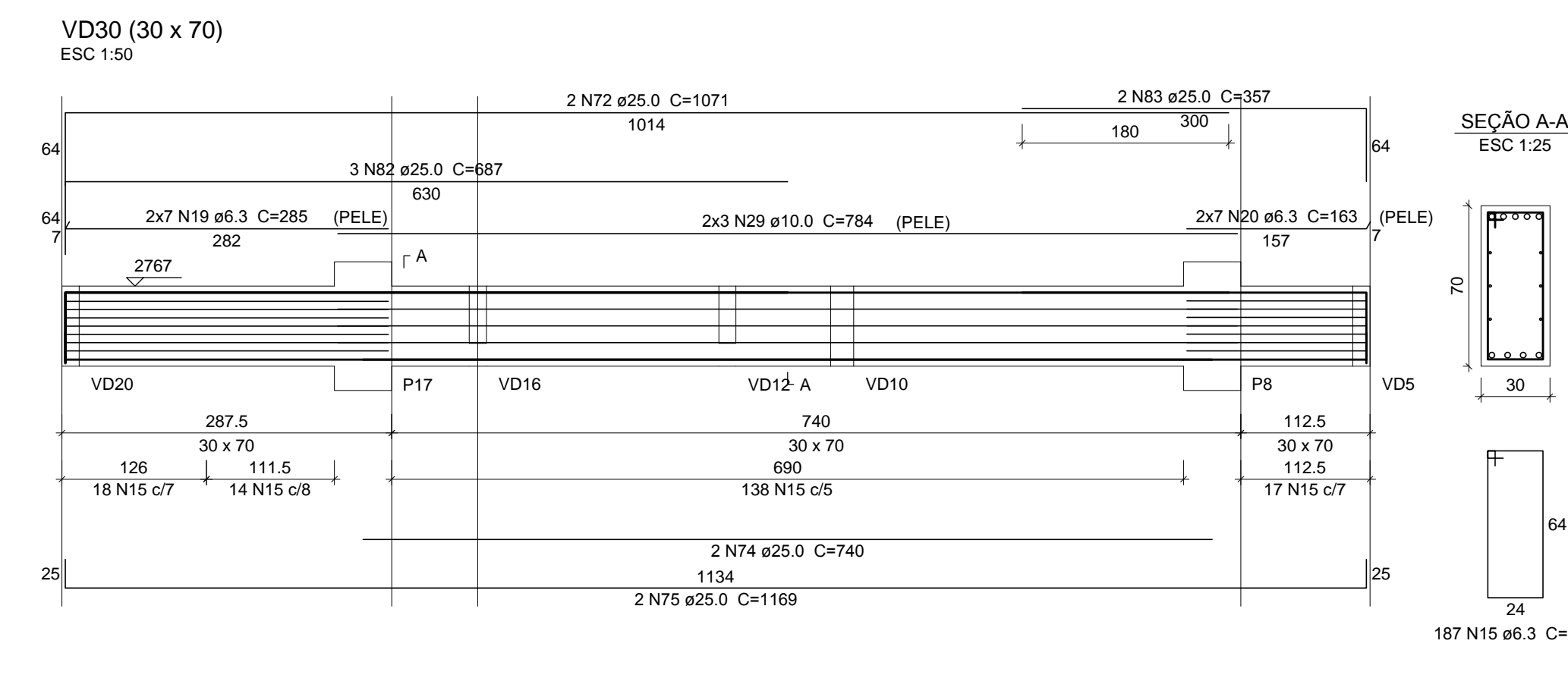
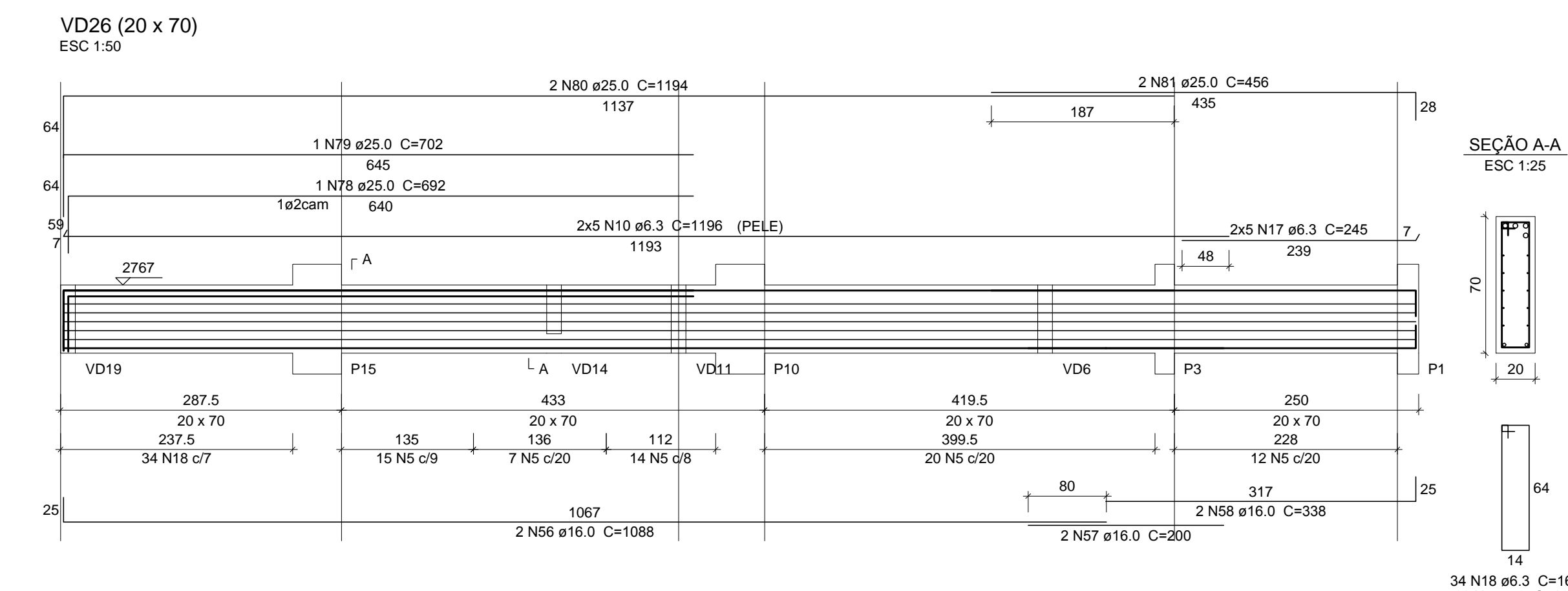
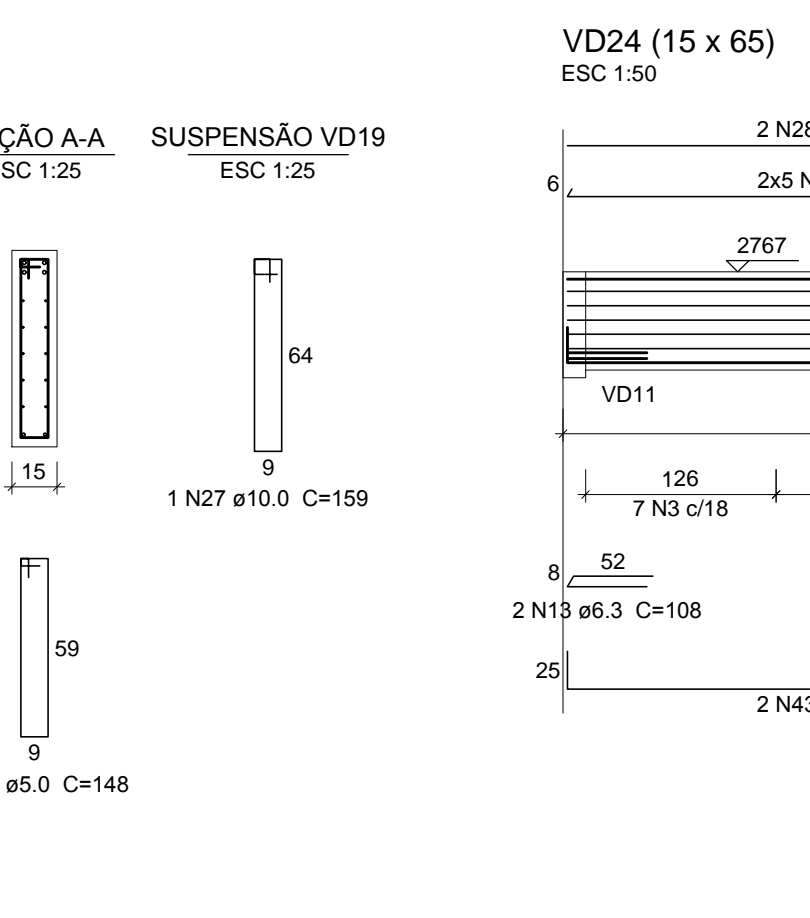
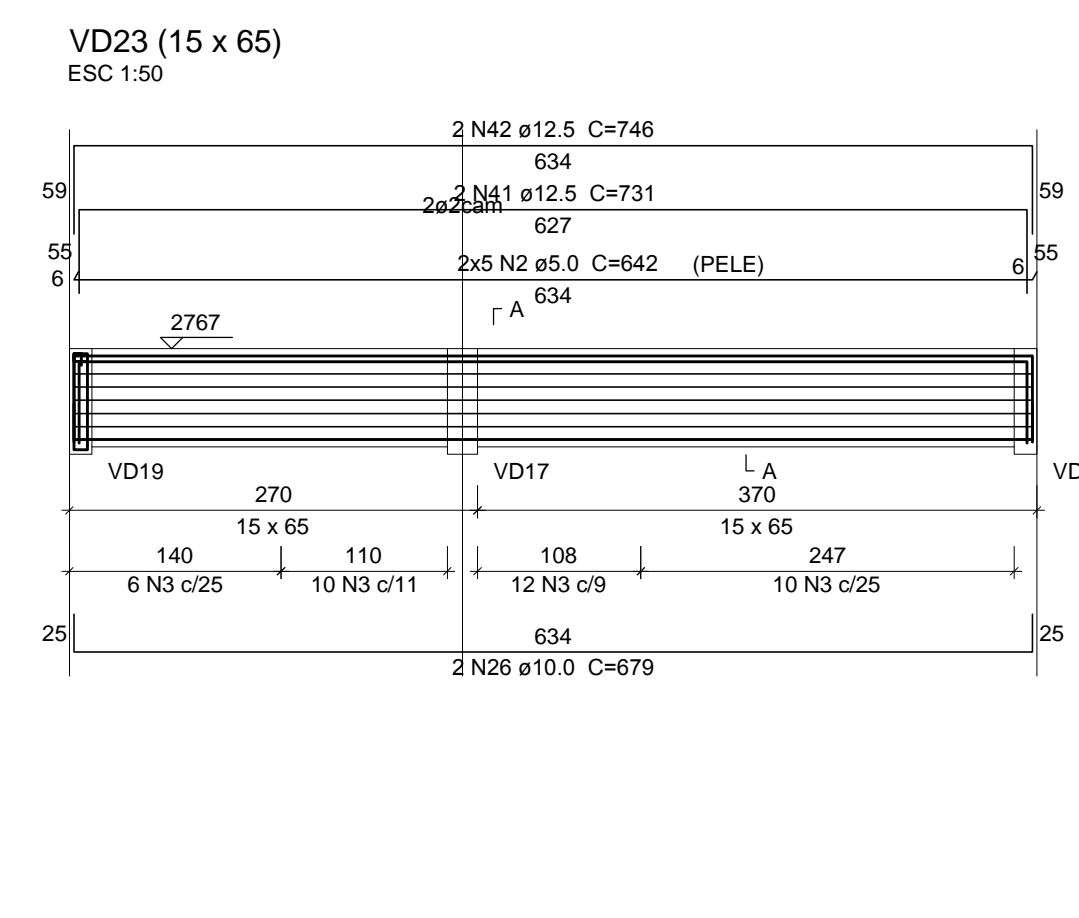
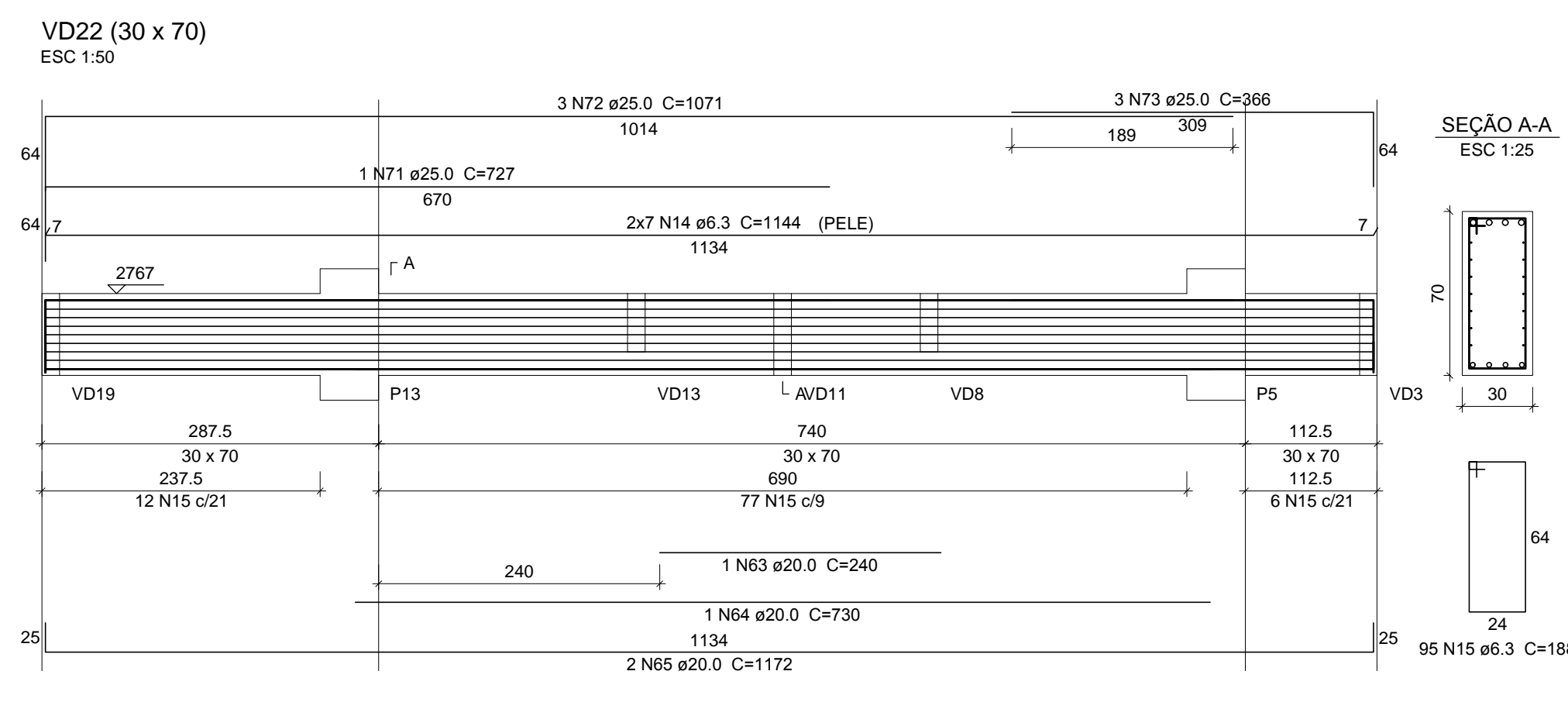


6. A EXECUÇÃO DA ESTRUTURA DEVERA OBEDECER AS PRESCRIÇÕES DA NBR-6118:2014



Resumo do aço			
AÇO	DIAM (mm)	C.TOTAL (m)	PESO (kg)
CA50	6.3	2303.5	563.7
	8.0	215.6	85.1
	10.0	139.6	86
	12.5	213.3	205.4
	16.0	192.5	303.8
	20.0	105.5	260
	25.0	376.4	1450.3
CA60	5.0	1059.1	163.2
PESO TOTAL (kg)			
CA50	2954.2		
CA60	163.2		

Volume de concreto (C-25) = 23.54 m³
Área de forma = 260.36 m²